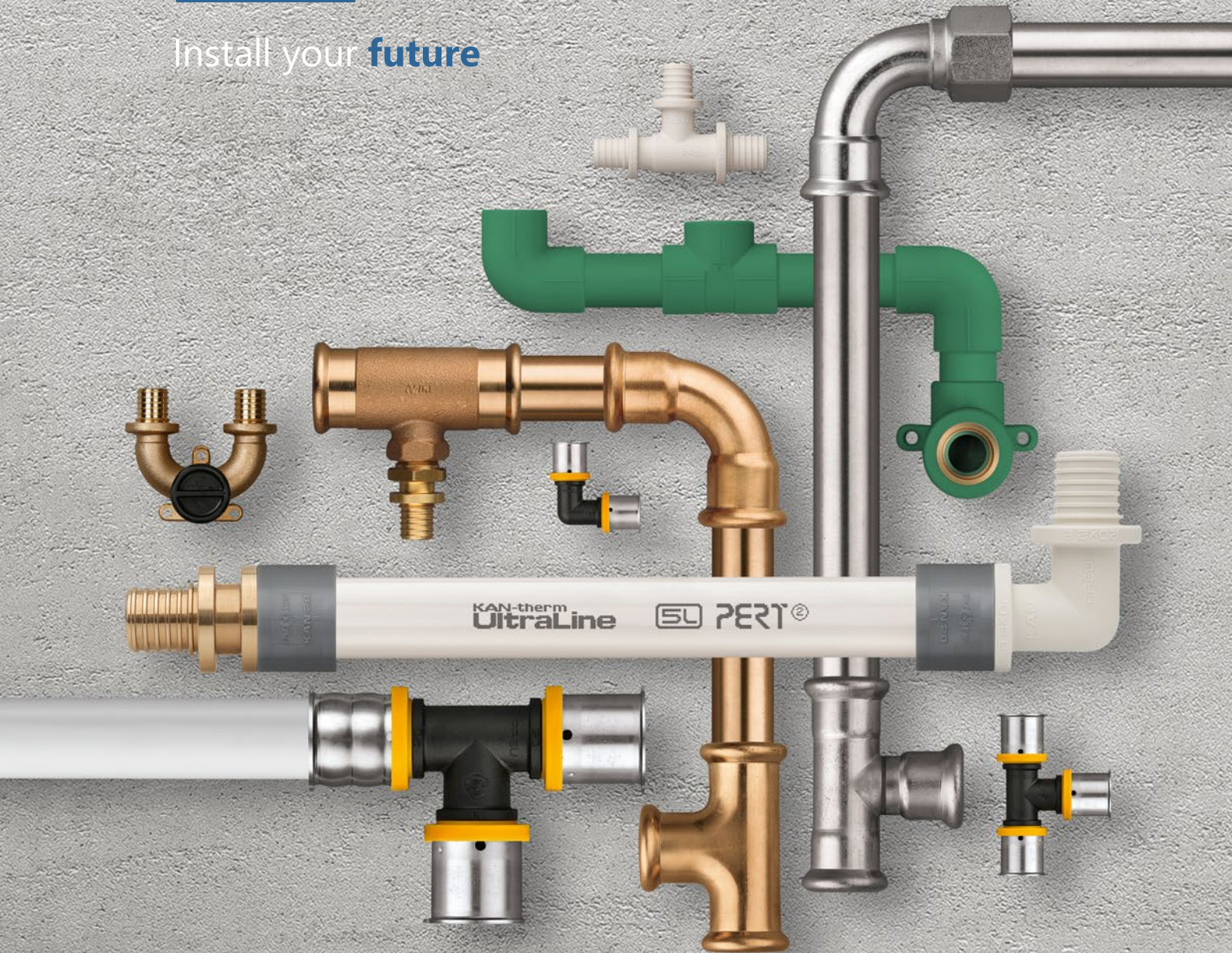




SYSTEM KAN-therm

Install your **future**



Multisystem pipe installation

KAN company

KAN, with its headquarters in Bialystok, is a renowned and internationally recognised manufacturer of modern and comprehensive installation systems known under the brand name KAN-therm.

Since the start of its activity in 1990, KAN has been building its leading position on such values as professionalism, innovativeness, quality and development. Today, it employs over 1,000 people, has a network of branches in Poland and outlets in Germany, Russia, Ukraine, Belarus and Hungary. Products with the KAN-therm trademark are exported to 68 countries worldwide, the distribution network covers Europe, a large part of Asia and also reaches Africa and America.



30

years of experience on the installation market

68

countries to which we export

1000

employees worldwide





Complete multipurpose installation system consisting of state-of-the-art, mutually complementary technical solutions for pipe water distribution installations, heating installations, as well as technological and fire extinguishing installations.



Install your **future**

COLOUR SYSTEM	NEW!						Inox	Copper	Surface heating	Cabinets, manifolds	Groove	Copper Gas	Sprinkler Steel	Sprinkler Inox
	UltraLine	Push Platinum	Push	Press	PP Green	Steel								
SYSTEM NAME	UltraLine	Push Platinum	Push	Press	PP Green	Steel	Inox	Copper	Surface heating	Cabinets, manifolds	Groove	Copper Gas	Sprinkler Steel	Sprinkler Inox
DIAMETER RANGE [mm]	14-32	14-32	12-32	16-63	20-200	12-108	12-168,3	12-108	12-25	-	DN25-DN300	15-54	22-108	22-108
INSTALLATIONS TYPE														
TAP WATER	●	●	●	●	●		●	●						○
HEATING	●	●	●	●	●	●	●	●	●					
TECHNOLOGICAL HEAT	○	○	○	○	○	○	○							
WATER STEAM							○							
SOLAR							○							
COOLING	○	○	○	○	○	○	●	●	○	○				
COMPRESSED AIR	○	○	○	○	○	○	○	○			○	○	○	○
TECHNICAL GASES	○	○	○	○	○	○	○	○				○	○	○
FLAMMABLE GAS												●		
TECHNICAL OILS							○	○						
INDUSTRIAL							○				○			
BALNEOLOGICAL					○		○							
SPRINKLER FIRE-FIGHTING													●	●
HYDRANT FIRE-FIGHTING													●	●
UNDERFLOOR HEATING AND COOLING	●	●	●	●					●	●				
WALL HEATING AND COOLING	●	●	●	●					●	●				
CEILING HEATING AND COOLING	●	●	●	●					●	●				
EXTERNAL SURFACES HEATING AND COOLING	●	●	●	●					●	●				

In untypical cases, it is necessary to check the conditions of using KAN-therm parts with technical and information materials or opinions of the KAN Technical Department. Use the form – Inquiry about the possibility to use KAN-therm elements – to send basic parameters of an installation operation. Based on the data sent, the Technical Department will assess the fitness of the system to the particular installation. The form can be found on the website. Scan the QR code to fill in the electronic form quickly.

● standard scope of application ○ possible use – the conditions to be confirmed with the KAN Technical Department

SYSTEM KAN-therm

UltraLine

Ø14-32 mm

INNOVATIVE and at the same time THE MOST UNIVERSAL system on the market for both internal heating systems and potable water, as well as specialised piping installations such as compressed air.

3 pipe types **2** connector materials **1** sleeve construction

Its unique design and the ability of flexible configuration of the complete end solution give great convenience to the installers and designers. The flexibility of the KAN-therm UltraLine system configuration consists of the possibility of using various types of pipes with the same design of fittings made of brass or plastic (PPSU) and plastic sleeves.

KAN-therm UltraLine is an excellent alternative for internal distributions, heating, cooling or hot domestic hot water installations in multi-family housings. The available range of diameters, even up to Ø32 mm, ensures flexibility in making complete heating, cooling and potable water systems in single-family houses.



01

Flexible choice of materials

02

Symmetrical sliding sleeve

03

Optimised hydraulics

04

Assembly in 270° range

05

No O-Rings



SYSTEM KAN-therm

Push

Ø12-32 mm

KAN-therm Push system is a complete plastic installation system, designed for constructing of indoor heating and potable water installations using a reliable, safe and fast assembly technology, consisting of sliding a brass or plastic ring on the fitting body. Its main advantage is the O-Ringless connection system.

Reliability achieved thanks to a unique solution – self-sealing connection, without additional O-rings. Fittings made of CW617N brass or PPSU plastic can be combined with homogeneous PE-RT and PE-X pipes with internal diffusion barrier (five-layer pipes).

The KAN-therm Push system is intended for constructing indoor water supply systems (hot and cold domestic water) heating and cooling installations, mostly for distribution in multi-family housings and complete installations in single-family houses.



01

Two types of homogeneous pipes

02

Two types of fittings and sliding rings

03

Minimised pressure drops

04

Wide range of assembly tools

05

No O-Rings

SYSTEM **KAN-therm**

Press

Ø **16-63 mm**

KAN-therm Press is a state-of-the-art, complete installation system consisting of multilayer polyethylene pipes with aluminium insert, as well as PPSU or brass fittings with 16-63 mm diameter range.

All fittings in the 16-32 mm diameter range have a unique "LBP" (Leak Before Press) construction with several innovative solutions increasing comfort and safety of assembly and guaranteeing the correctness of the connections.

The system is designed for indoor water supply installations (cold and hot domestic water), central heating (or cooling), technological heating and industrial installations (e.g. compressed air).



- 01** | Unpressed connections indicator (LBP)
- 02** | Multi-purpose scope of use
- 03** | Installation and operation safety
- 04** | Comfortable assembly
- 05** | Easy identification of diameters by ring colour on the fitting

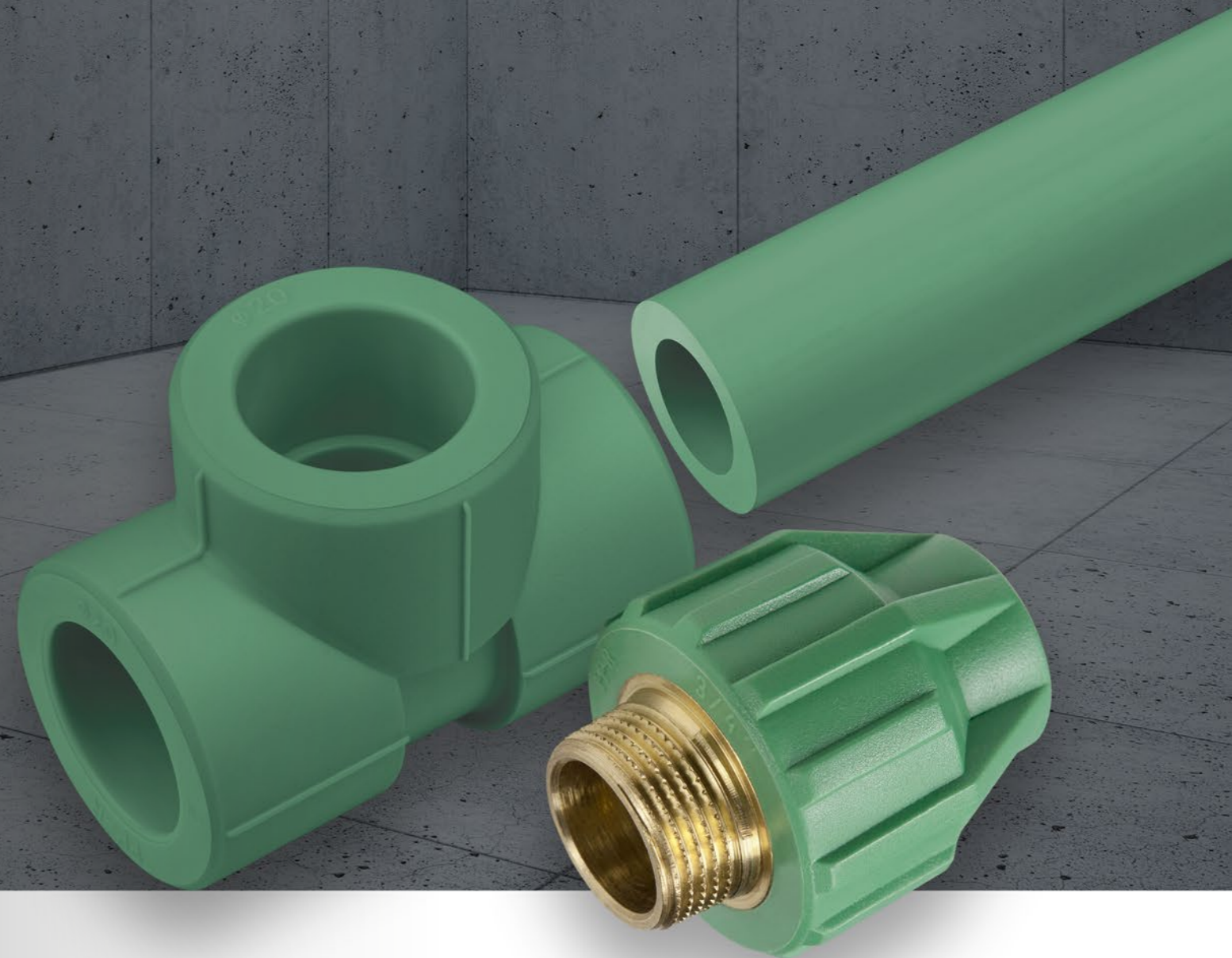


SYSTEM **KAN-therm**

PP Green

Ø20-200 mm

KAN-therm PP Green is a complete installation system consisting of pipes and fittings made of thermoplastic polypropylene PP-R (type 3) with a diameter range of 20-110 mm and beta polypropylene copolymer PP-RCT with a diameter range of 125-200 mm.



Connection of the system elements is performed by muff welding (thermal polyfusion) with use of electric welders. This welding technology creates uniform connections and therefore guarantees exceptional tightness and mechanic durability of the installation.

Complete neutrality towards potable water predisposes the system perfectly for use in indoor water supply systems. Thanks to its wide range of diameters and use of materials resistant to corrosion processes, the KAN-therm PP Green system is suitable for performing indoor heating and cooling installations in single and multi-family housings as well as public utility buildings.



01

Versatility of applications

02

Wide pipes range

03

Durable connections

04

Optimal hydraulics

05

Highest quality guaranteed

SYSTEM **KAN-therm**

Steel

Ø 12-108 mm

Complete, state-of-the-art installation system consisting of pipes and fittings made of high-grade zinc-plated carbon steel.



The system is designed for use in indoor, pressure-closed installations of central heating, chilled water, technological heat, solar, as well as industrial (e.g. heating oil).

KAN-therm Steel system is used in multi-family housings and public buildings, to construct new, indoor heating installations. Its material specification and comprehensive range of products allow for performing complete, pressure-closed installations (without the access of air to installation medium).

Due to simple, fast, and safe assembly, thanks to secure and fully tested "Press" assembly technology (which does not require the use of open fire), the KAN-therm Steel system is recommended especially for replacing old, corroded steel heating installations in multi-family buildings.

- 01** Easy and quick assembly
- 02** Quality and reliability
- 03** Aesthetics and resistance to corrosion
- 04** Resistance to high pressure and temperature
- 05** High mechanical strength



SYSTEM KAN-therm

Inox

Ø12-168.3 mm

Highly durable installation system consisting of pipes and fittings made of high-grade stainless steel.



The system is designed for use in typical residential installations (heating, tap water, solar installations) as well as in a wide range of technological and industrial installations (chilled water, deionised water, compressed air, oils, greases, fuels, chemicals).

Thanks to the use of top-class construction materials, the KAN-therm Inox system is successfully used in many residential and public buildings or the construction of various technological installations in the industry.

- 01** | Material for many years
- 02** | Top quality and aesthetics
- 03** | High resistance to corrosion
- 04** | Durability and versatility
- 05** | GIGA hydraulics



SYSTEM **KAN-therm**

Groove

Ø **DN25-DN300 mm**

The KAN-therm Groove system consists of fittings and clamps using the technology of connecting by grooving and is available in diameters range DN25 up to DN300 (we can supply larger diameters on individual request). The system is characterised by reliable connections and quick, uncomplicated and safe assembly.

Thanks to the use of the most modern production technologies, our products meet the strictest requirements and have national and international quality certificates.

The use of high-quality materials, a wide range of diameters, and high-pressure resistance reaching 69 bar make it possible to use the system in compressed air installations, as well as in the industrial, shipbuilding, and mining sectors.



01

Wide diameters range

02

Tested materials

03

Exceptional durability

04

Simple assembly

05

Full safety



SYSTEM **KAN-therm**

Copper

Ø **12-108 mm**

The KAN-therm Copper system is a modern installation system consisting of top-quality fittings made of CU-DHP copper and 2.109 bronze, with diameters range 12 up to 108 mm. The use of "Press" connection technology guarantees uncomplicated assembly and failure-free operation.

The KAN-therm Copper system is designed for constructing new, complete (supply risers and horizontal distribution pipes), indoor-use heating installations as well as hot and cold potable water installations in multi-family housings.

Because of the high quality of the material used for the production of fittings (copper), the KAN-therm Copper system is particularly recommended for installations in buildings of a higher standard or the case of investments with a higher cleanliness regime, such as heating or potable water installations in hospitals, laboratories, treatment rooms, etc.



- 01** Safety
- 02** Simplicity and reliability
- 03** Reliable, 3-point clamp
- 04** Savings
- 05** Top aesthetics and resistance to corrosion

SYSTEM **KAN-therm**

Sprinkler

Ø22-108 mm

KAN-therm Sprinkler is a fire extinguishing installation system consisting of pipes and fittings made of zinc-plated carbon steel (Steel Sprinkler) or stainless steel (Inox Sprinkler) in a 22-108 mm (DN20 - DN100) diameter range.



The KAN-therm Sprinkler system is designed for indoor-use, fire extinguishing sprinkler and hydrant installations. Both material versions are verified and certified according to VdS guidelines for application in stationary sprinkler systems behind emergency valve, within rooms characterised by low or medium fire hazard (LH, OH1, OH2, OH3, and to OH4 in respect to exhibition halls, cinemas, theatres and concert halls).

The possibility of using the KAN-therm Steel and Inox Sprinkler system in fire protection installations is allowed by the National Technical Assessment issued by the CNBOP. The KAN-therm Steel Sprinkler system is intended for internal, wet sprinkler installations as well as for internal, non-flow, closed-loop hydrant installations separated or connected to utility water systems on one side. The KAN-therm Inox Sprinkler system is intended for internal, both dry and wet sprinkler installations as well as for internal, permanently hydrated hydrant installations.

01

Quick and safe assembly

02

Installation aesthetics

03

High resistance to corrosion

04

Fire safety

05

Certified quality



SYSTEM **KAN-therm**

Surface heating and cooling

Ø 12-25 mm

The systems of low-temperature water heating and cooling which make use of floor or wall surfaces as a source of heat (or cold) in rooms.

The KAN-therm system offers a full range of installation solutions for surface heating and/or cooling installations: pipes, thermal insulations, assembly elements, manifolds, installation cabinets, control automation.

The optimal distribution of temperature in a room allows to decrease the air temperature, maintaining thermal comfort, which results in reduction of the supplied thermal power.



01

Aesthetics and room use comfort

02

Easy assembly

03

High quality of elements

04

Thermal energy saving

05

Safety for years

SYSTEM KAN-therm

Control automation

KAN-therm SMART & Basic+ are two independent, complete control systems making it possible to maintain thermal comfort in a building with the optimal operation of the heating or cooling source and high energy efficiency of the entire heating or cooling system.

Diversity of solutions for the heating technology and in first-line solutions of very commonly used mixed heating systems, e.g. underfloor heating combined with conventional radiator heating, despite many advantages, without proper control elements, can lead to substantial discomfort. Usually it is related to overheating, underheating or uneven temperature in individual spaces.

Lack of an optimally configured automation controlling individual heating systems can cause significant heat losses (overheated rooms), and thus to increase the operation cost of a heating system exploitation. The optimal distribution of temperature in a room makes it possible to decrease the temperature, maintaining thermal comfort of the air, which results in reduction of the supplied thermal power.



01

Wired and wireless control

02

For heating and cooling

03

Modern design

04

Control with an app

05

Energy efficiency



SYSTEM **KAN-therm**

Slim & Slim+

The special feature of the Slim and Slim+ recess-mounted installation cabinets is their frameless design developed by KAN designers.



They owe their name to the thin (slim) construction of the front, which is perfectly compatible with the wall surface. Investors will definitely appreciate their modern design and high sanitariness and aesthetics. Installers, on the other hand, will like the easy and quick assembly, without the need for additional tools, as well as the simple design.

The cabinets are characterised by modern design and a range of new solutions making the assembly easier for the installer. When developing such an innovative solution, KAN focused on even greater aesthetics, as well as increased functionality and solutions keeping aesthetics at the highest level.



01

Protection of surface

02

Easy assembly

03

Adjustment of depth

04

Move & Lock function

05

Clean, aesthetic surfaces

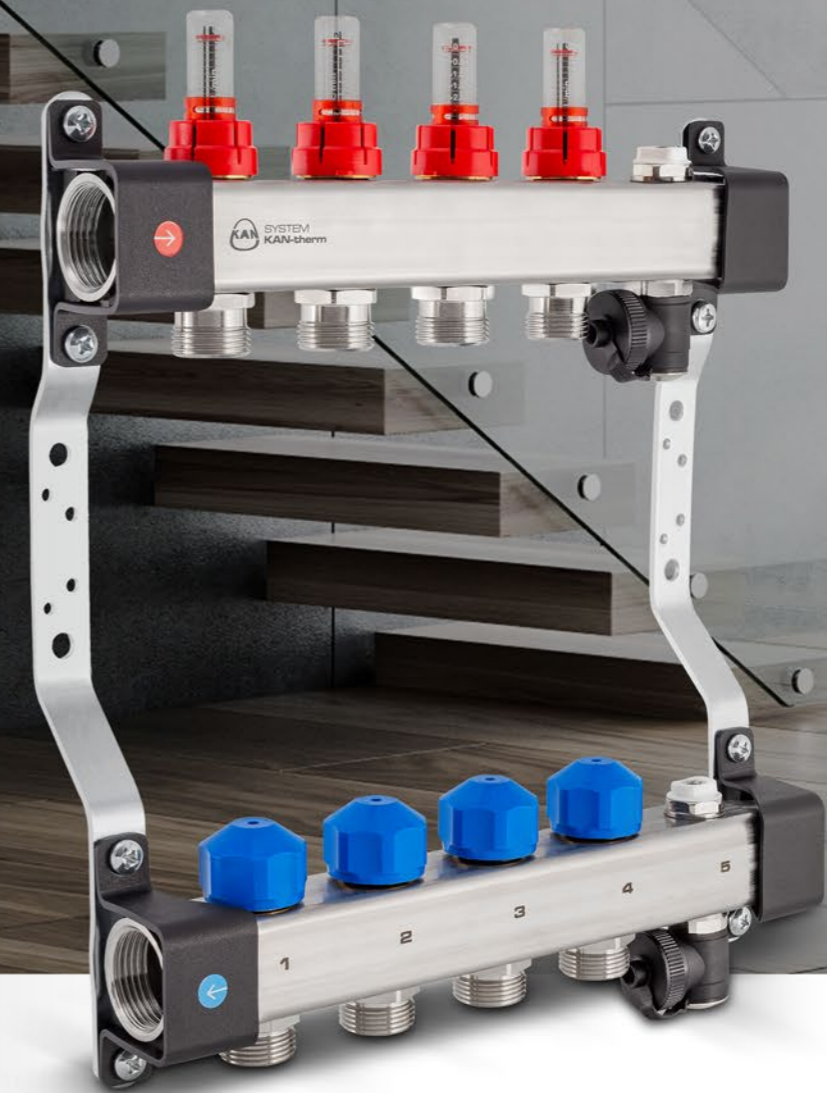
06

Information about the height of the floor

SYSTEM KAN-therm

InoxFlow

The new line of KAN-therm manifolds based on 1.4301 stainless steel beams.



The innovative production technology and the use of stainless steel profile with a larger inner diameter and a wall thickness smaller than in the brass construction make the hydraulic capacity of KAN-therm InoxFlow manifolds almost twice as big as in the brass version, without any loss of mechanical strength.

All KAN-therm InoxFlow manifolds have a 10-year guarantee on the beam profile and a 2-year guarantee on control elements, automation elements and a circulation pump. The wide range of variants of the new KAN-therm InoxFlow manifolds covers 100% of the current brass designs of manifolds and will eventually replace them in the KAN-therm offer.

- 01** Noble material
- 02** Easy flow identification
- 03** Option to turn the beam
- 04** Increased capacity
- 05** Simple identification of circuits
- 06** Compatibility with other KAN-therm solutions



SYSTEM **KAN-therm**

Residential Manifold Set (RMS)

RMS are prefabricated sets of manifolds designed for supplying multi-family housings with cold and hot water, as well as the heating medium.

It makes it possible to provide both the metering points of a heating installation, as well as potable water in one compact construction. The RMS is innovative, compact and offers a very convenient technical solution, which has not yet been available on the installation market. The design is legally protected and patented.

The use of RMS makes it possible to save installation time, which translates into cost reduction and faster finishing of the building and then its commissioning. The innovative product is ready to be connected to heating and water supply installations, which means that the leakage test can be carried out immediately. The compact construction based on a frame with manifolds is a solution that is both aesthetic and functional because it saves usable space.



PATENT
PROTECTION



01

Compact design

02

Versatility of the configuration

03

Short time of assembly

04

Saving residential area

05

Immediate tightness control



Tools

UltraLine

All elements of the KAN-therm UltraLine system must be combined using specially dedicated tools. These tools are included in the system offer.

The light and compact design, as well as the integrated torch, significantly increase the comfort and safety of work on the construction site. The battery charge indicator makes it possible to constantly monitor and prepare tools in advance, so users can organise and save their working time accordingly.

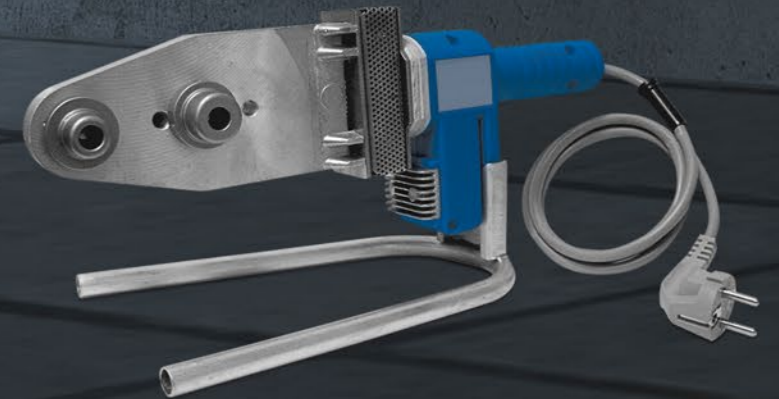


Tools

PP Green

Apart from pipes and fittings, KAN-therm PP Green offers a wide range of advanced welding tools.

Tool sets with 800W and 1600W welders equipped with welding inserts for every pipe diameter.



Tools

Pressing radially

Wide range of radially pressing drives prepared by well-known and renowned tool manufacturers.

From small, light and compact to powerful and durable with up to 100 tons of pressure!

SYSTEM KAN-therm
Press



SYSTEM KAN-therm
Steel, Inox



SYSTEM KAN-therm
Sprinkler



SYSTEM KAN-therm
Copper



SYSTEM **KAN-therm**

Football

The KAN-therm Football system is a set of specially designed, selected, and interconnected products that form a full installation for heating an outdoor area.

The elements of the KAN-therm Football system are prepared for a specific investment. Technical documentation is prepared based on the information collected about the investment and investor requirements. It initiates the process of selecting and preparing individual products. KAN-therm Football system is dedicated to large area investments.

With the KAN-therm system for sports field heating, icy, snowy or muddy surfaces are now a thing of the past. Heating with the KAN-therm system makes it possible to use the sports field all year round, minimising the risk of player injuries.



01

Comprehensive investment service

02

Top quality material

03

Experience

04

Support with the investment

05

Safe use





Many high buildings in Europe use the solutions of **KAN-therm Multisystem**

They are present in thousands of residential buildings, houses, industrial and sports facilities in many countries all over the world. For over 30 years they have been the No. 1 choice in the most prestigious facilities.





The best proof of the top quality is the numerous projects in various sectors of the construction industry

The KAN-therm system is an excellent solution both for new investments, as well as for renovated buildings. It is supported by many years of experience and passion of KAN engineers, rigorous quality control of raw materials and finished products, as well as effective recognition of the needs of the installation market, in line with the requirements of sustainable construction.

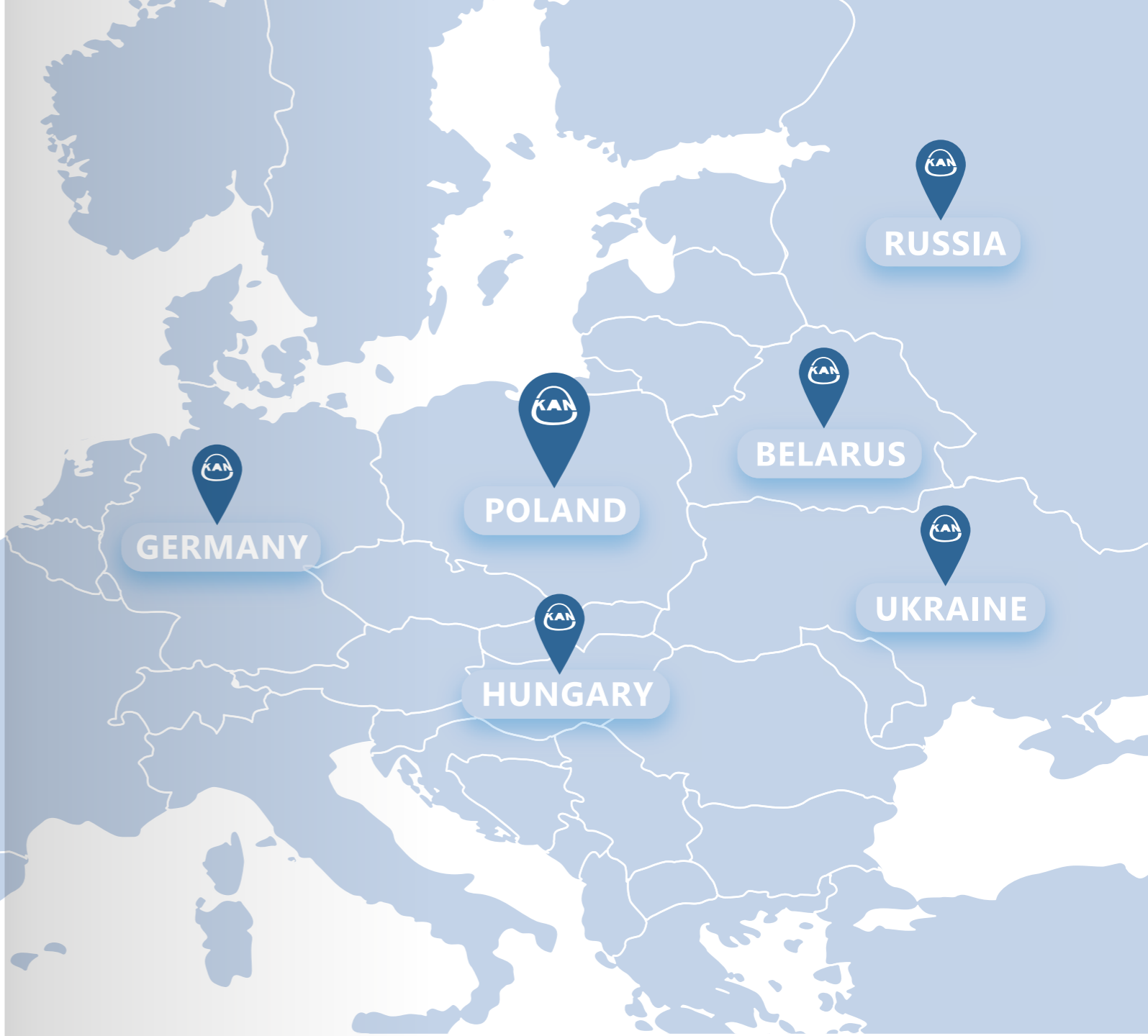




Install your **future**

THE PRODUCTS WITH THE LABEL KAN-therm ARE DISTRIBUTED TO 68 COUNTRIES IN THE WORLD.

KAN Group has a network of branches in Poland, Germany, Russia, Ukraine, Belarus and Hungary. The distribution chain covers Europe, a significant part of Asia, it also reaches Africa and America.



HEADQUARTERS

KAN Group
Zdrojowa St. 51, 16-001 Kleosin, Poland.
tel. +48 85 74 99 200
e-mail: kan@kan-therm.com

www.kan-therm.com

Multisystem **KAN-therm**

Complete multipurpose installation system consisting of state-of-the-art, mutually complementary technical solutions for pipe water distribution installations, heating installations, as well as technological and fire extinguishing installations.

	UltraLine		
	Push/Push Platinum		
	Press		
	PP Green		
	Steel		
	Inox		
	Groove		
	Copper, Copper Gas		
	Sprinkler		
	Surface heating and cooling Control automation		
	Football Stadium installations		
	Cabinets and manifolds		